

DOOR

SYSTEMS, INC.

"The TOTAL DOOR People"



1-866-534-DOOR(3667) WWW.DOORSYSINC.COM



"The TOTAL DOOR People"

Door Systems, Inc. is a full service door company dedicated to providing innovative solutions to your existing door needs, as well as, assisting in concept design and layout of all future door projects.

Whether you are an architect seeking consultation on a new construction project or a building owner/engineer looking to bring your existing doors up to code while reducing maintenance cost, the Door Systems, Inc. staff is here to assist.

Door Systems, Inc. represents the integrated door system known as Total Door. The Total Door system has been successfully proven for over thirty years, appearing in some of the finest structures in the world and in many of the most diverse applications imaginable. By utilizing Total Door for your next new or renovation project, you will be acquiring the best, complete, single source solution for your door opening requirements.

I invite you to review the full array of products and services we have to offer and look forward to assisting you with any questions you might have regarding your future door needs. Door Systems, Inc. is committed to providing our clients with first rate customer care in all phases of every project - from concept to completion and beyond.

Sincerely,
Jeff Bonnema, President

Table of Contents

| | | | |
|---------------------------|-----|-------------------------------------|----|
| Introduction..... | 1 | Behavioral Health Doors..... | 10 |
| Testimonials..... | 2 | Areas of Assembly..... | 11 |
| Elevator Shaft..... | 3-4 | Finishes, Sizes & Fire Ratings..... | 12 |
| Elevator Lobby..... | 5-6 | Hardware..... | 13 |
| Cross Corridor..... | 7 | Closers, Mags, Vision Lites..... | 14 |
| Electric Doors..... | 8 | Total Door Advantages..... | 15 |
| High Use/Abuse Doors..... | 9 | | |

Here's What Our Customers Are Saying

Testimonials

"Kaiser-Sunset LAMC Hospital is very happy with the integrated cross corridor fire door assemblies as manufactured by Total Door...The doors are reliable and operate smoothly and efficiently...Based on our experience we highly recommend the use of Total Door on other Kaiser facilities."

– Ed Banda,
Superintendent of Kaiser Construction

"Total Doors are a big upgrade to the original conventional doors we had in the building. The fact that the Total Door system has sleek, low profile hardware with a lifetime warranty is a big plus and really solved an ADA accessibility issue..."

– Robert J. Scrofano, Senior Project Manager,
USC Capital Construction Development

"I am happy to say that four years later the Total Doors are still going strong after all the high traffic and heavy abuse from the college athletes that use these doors on a daily basis. I am very happy with the doors since they have been maintenance and worry free. Using Total Door is a great long term value for any building owner."

– Michael Strebel, Carpenter II,
Thomas and Mack Center

"Because of the integrated door design advantages that only the Total Door system offers allowing for easy/quick installation and long term reliability we are very happy with the Total Doors and the service Door Systems has provided us. We plan on purchasing more Total Doors for our future projects"

--Pat Rugg, Facilities Manager, UCLA Santa Monica
Medical Center and Orthopedic Hospital



MOTOR OPERATED CROSS DOOR



CLASSROOM/LECTURE HALL



GYMNASIUM/LOCKERS

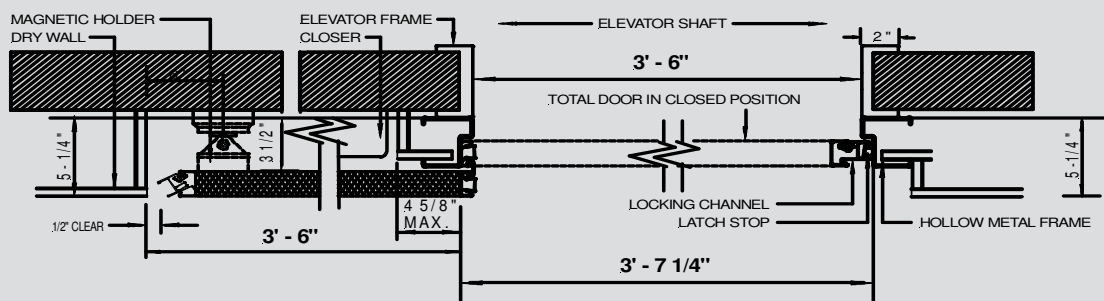


OPERATING ROOMS

Elevator Shaft Assemblies



180° Elevator Smoke Assembly Single

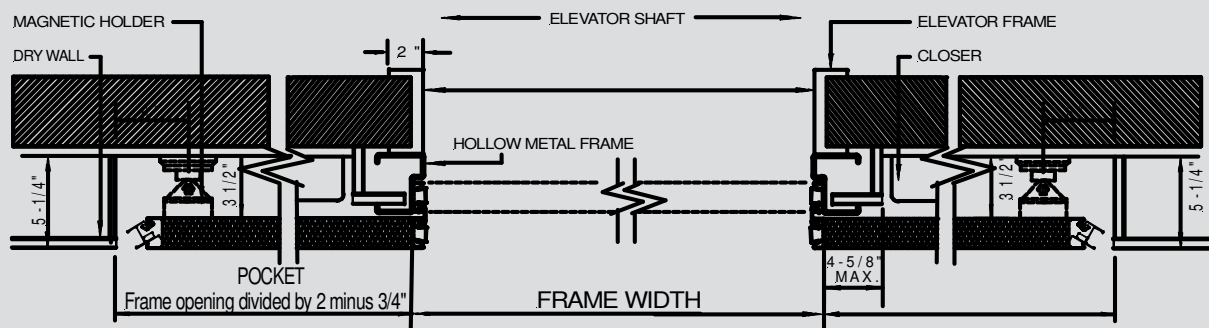




An economical and architecturally pleasing solution to your smoke containment requirements.

The Elevator Smoke Door Assembly by Total Door has been tested in compliance with UL 1784 test requirements and has a 1.088 cfm rating. ADA compliant.

180° Elevator Smoke Assembly Pairs

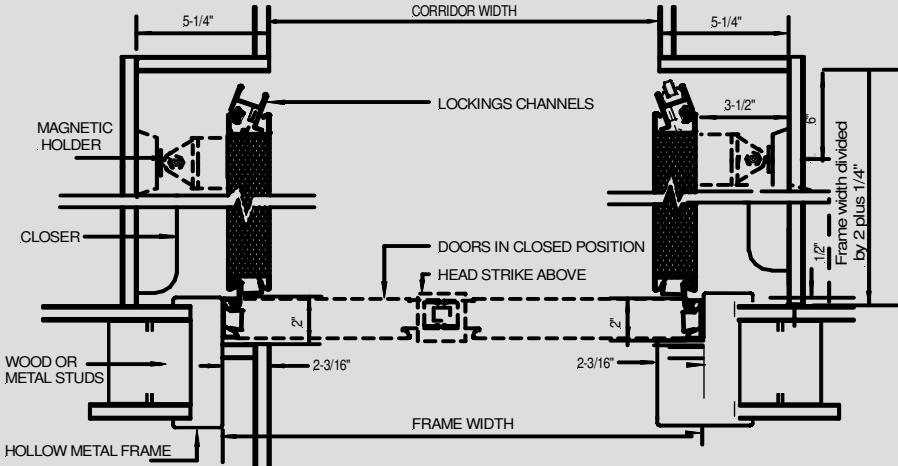


Elevator Lobby Doors



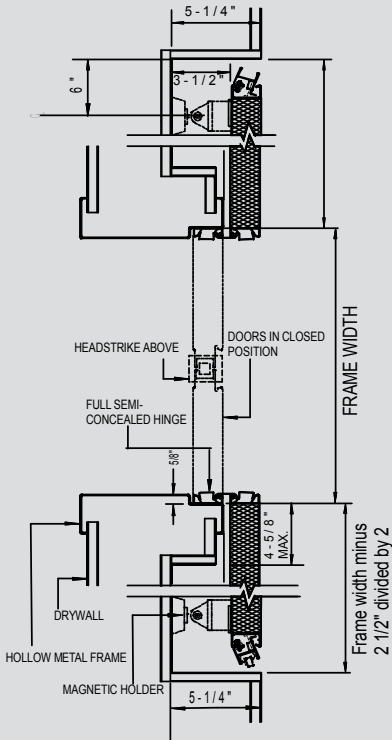
As with all Total Door systems we use a full height, semi concealed hinge and a full height locking channel with flush hardware to create an architecturally pleasing installation that eliminates unsightly hardware.

Tested as an integrated door system so you can be confident you are in compliance with all local and national fire codes for the complete opening.

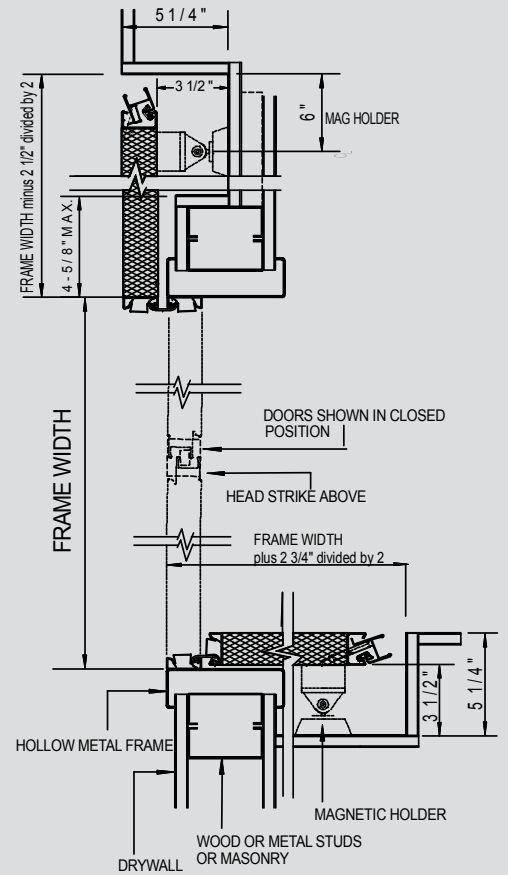


90° Elevator Lobby

Elevator Lobby

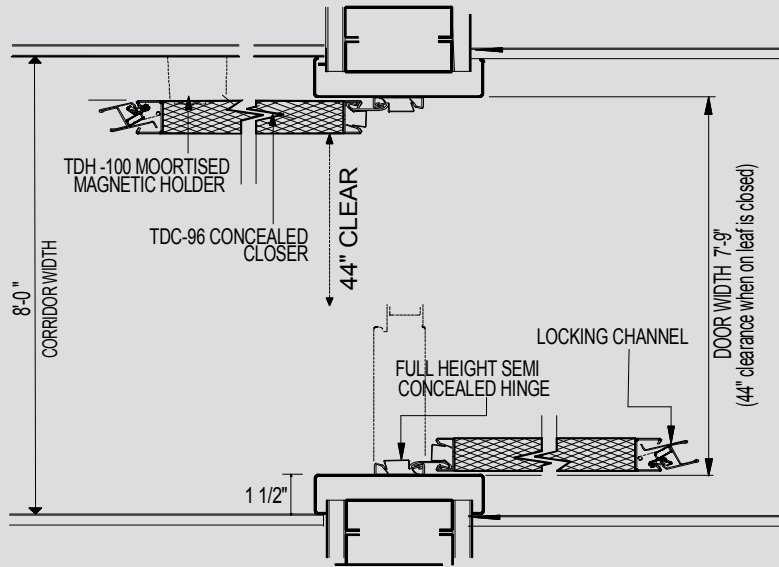


180° Elevator Lobby



90°/180° Elevator Lobby

Cross Corridor Fire Doors



Minimum side room requirements while providing maximum width

Eliminate the need to remodel your hallways in order to meet California OSHPD requirements. Our flush exit device on 7' - 9" pairs or double egress pairs creates a 44" opening clearance per door.



Option

The TDC-96 concealed closer and the TDH-100 concealed electromagnet minimizes side room requirements without penetrating the corridor wall.

Cross Corridor Fire Doors

Shown above is a 3 hour positive pressure A label pair of cross corridor fire doors. The factory baked-on epoxy finish allows the doors to blend in with the architects color scheme.

The special push-pull grips are un-obstructive. The elimination of floor hardware, coordinators, vertical rods, hinge butts, astragals, etc. provides fire protection and safety without destroying the architectural design.



Electric Doors



Total Door's remotely controlled electric door incorporates all internal wiring into the door system at the factory to give the door system a very clean look with no exposed wires, superior durability and exceptional value.

Electric Doors Include A Power Source And Are Available As Follows:

FAIL SAFE (Example: Stairwell doors)

FAIL SECURE (Example: Security room doors)

ELECTRIC UNLATCHING (Example: Motor operated doors)

ELECTRIC PANIC (Example: Entrance doors)

SINGLE, PAIRS OR DOUBLE EGRESS

NON LABELED, A, B, C, or 20 minute label



The High Use/Abuse Door Construction Package

Hardware Life Expectancy



Total Door with the 'abuse construction package' option is a durable door system able to handle the toughest environments. Ideal applications include hospitals, motor operated and security doors, stairwells, entry doors, schools, theaters, conference rooms, ball rooms, etc.

Standard Upgrade Features Include:

- Higher density core
- Extra welds around perimeter of door body
- Top and bottom rail cap

Optional Features Include:

- Heavier gauge door skins
- Latching channel guards
- Armor/kick plates
- Panic edge protectors
- Hospital edge guards



Behavioral Health Door System

Should the door become blocked from inside the room, the Fire Labeled Behavioral Health Door with it's Emergency Release Hinge allows for quick removal of the door from the corridor.

This is accomplished by removing the screws from the Psychiatric Hinge Backing Plate. Size restriction: 4'0" x 8'0" handing right or left hand only.



1. Unscrew the quick release hinge back plate
2. Use the hinge pull handles to grip the door
3. Bottom casters make pulling the door out of the opening simple and easy.



Key Features

- Quick-release steel continuous hinge allows for complete removal in less than a minute
- Concealed casters affixed to the bottom rail to assist in the door removal process
- Anti-ligature hardware designed to prevent self harm and promote safety
- All fire labels available and ADA compliant
- Single source supplier for entire system
- Exceeds ANSI and BHMI standards
- Normal life expectancy of 5 million cycles
- Lifetime warranty hardware

Areas of Assembly



LOCKING CHANNEL

- Maximum design flexibility
- Quiet and smooth operation ideal for meeting rooms, theaters, auditoriums
- Abuse resistant and low maintenance
- Custom finishes and low profile panic hardware
- Full height hinge and locking channel minimizes light and sound transfer



CONTINUOUS HINGE



Finishes, Sizes & Fire Ratings



Finishes

Total Door offers a wide variety of door finishes that are available on all labels including 3 hours

- Prime painted
- Polyurethane custom color paint
- FRP, IPC, vinyls
- Wood veneers with factory custom stain
- Architectural metals



Sizes & Fire Ratings

- As Small As 1'-0" wide leafs
- Up To 4'-2 3/16" wide leafs - Single
- Up to 8'-4 3/8" wide - pairs giving a true 8'-0" clear width
- All doors are custom built in 1/16" size increments
- Ideal for uneven pairs
- All size door leafs are fully functional
- Up to 10' tall
- A, B, C, 20 minute, non-labeled
- Positive pressure
- Negative pressure
- 250 degree temperature rise

**Note: Label may limit door size*



Hardware

Fulfilling your requirements for beauty, functionality, and exceptional value

All Hardware Including The Following:

- Lifetime warranty
- No lubrication required
- Fire-rated up to 3 hours
- ADA compliant
- Cycle tested to over 5 million cycles
- Factory installed
- Variety of finishes available



Flush Panic

Offers the smallest projection in the industry at a mere 1/8" with the door in the open position.

Standard Panic

Narrow 1 5/16" projection allows for 32" clear width in a 36" opening. Comes in standard 24" width or custom sized widths. All locking functions are available including electric and remote dogging.



Levers

Our levers come in a variety of styles and can be used together with our panics. All locking functions available including electric locking functions.

Key cylinders: Use standard cam mortised cylinder. Total Door systems have been designed to allow you to use the same cylinder system you have on the rest of your project.



Operating Grips & Push Plates

Total Door grips, mechanisms and trim are factory installed and do not require any field labor. They offer simplicity in design and resistance to abuse and forced entry.

Standard Lever Finish Options:

- 605 Bright Brass
- 606 Satin Brass
- 611 Bright Bronze
- 612 Satin Bronze
- 630 Satin Stainless
- 710 DBA



Codelocks CL5000

Battery powered access control.

New construction or retro-fit onto existing Total Doors.

Closers, Electromagnetic Holders, Vision Lites

Standard Conventional Closer & Mag

TDC 5051 Heavy Duty Closer

- Universal application
- 25 year warranty
- Adjustable power (1 to 6)
- Aluminum or bronze finish

TDH 200 Mag Holder

- Dual voltage (24/120V)
- Optional extension rods
- Aluminum, chrome, or bronze finish



TDC 96/TDC 96P Concealed Closer

- TDC 96 for in frame configuration
- TDC 96P for pocket configuration
- Cam action is 60% more efficient than standard rack & pinion closer
- Factory installed
- No costly field installation
- Invisible when door is closed
- Adjustable power (1 to 5)
- Up to 135 degree opening angle
- Stronger latching yet ADA compliant
- Low side room requirements



Vision Lites



Lite kits and louvers are available in standard and custom configurations

Maximum visible glass size (sq. inches)

| Fire Rating | Standard Wire Glass | Pemko Wire Glass | Ceramic Glass |
|-------------|---------------------|------------------|---------------|
| 3 Hour | N/A | N/A | 100" |
| 1 1/2 | 100" | 2,208" | 2,036" |
| 3/4 | 1,296" | 2,856" | 3,204" |
| 20 minute | 1,296" | 2,856" | 3,204" |

TDH 100 Mortised Concealed Mag Holder

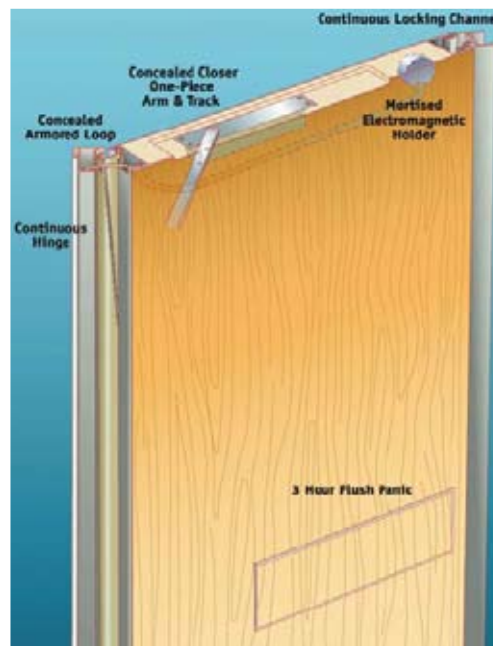
- Factory mortised in the door
- Only 1/8" projection
- Pre-wired in the door
- No outlet box in the wall needed
- Eliminates coordination with electrician
- Solution to limited wall access
- 40lb holding surface

Total Door Advantages

COMPARE THE TOTAL COST

Exterior 6070 Pair

| | Labor Hours Other Doors | Labor Hours Total Door |
|---|----------------------------|---------------------------|
| Install and Swing Door | 0.941 | 0.941 |
| Kick Plate | 0.533 | 0.0 |
| Lite Kit Glazing 1 sq. ft. | 0.860 | 0.0 |
| Door Sweep | 0.320 | 0.0 |
| Weather Stripping | 0.107 | 0.0 |
| Panic, Vertical Rod, with Exterior Trim | 2.000 | 0.0 |
| Surface Closer with Standard Arm | 1.333 | 0.333 adjust only |
| Total Hours | 6.094 | 1.274 |

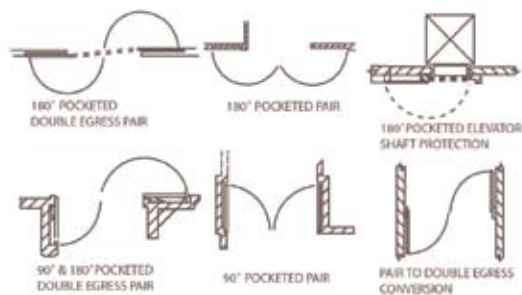


ECONOMY

COMPLETE ONE SOURCE ASSEMBLY

- Factory assembled and delivered as a system (greatly reducing installation cost)
- Fewer parts mean low maintenance and life cycle cost
- Single source responsibility for all parts and labor.

SAMPLE APPLICATIONS



OPTIONAL FEATURES

EVERY DOOR IS CUSTOM DESIGNED

- High abuse package, lead lined doors, various electric unlatching features to integrate with automatic operators

AESTHETICS

RECESSED IN SHALLOW POCKET FLUSH WITH THE WALL

- Flush panic hardware (5/8" closed, 1/8" open)
- Full height semi concealed hinge
- Full height locking channel
- Custom colors, HPL or wood veneers, even on 3 HR fire ratings
- Doors are customized (1/16") and up to 4'-2 3/16"x10' singles and 8'-4 3/8"x10' pairs

ADAPTABILITY/CODE ISSUES

MEETS OSHPD AND ADA REQUIREMENTS

- All fire labels available including smoke and/or temperature rise labels
- Positive pressure tested
- Only full line fire door listed in Category "D" as a "Door & Frame Assembly"

RELIABILITY/SECURITY

MANUFACTURED FOR OVER 25 YEARS

- Tested to 5 million cycles and greater
- All hardware is Grade 1 with lifetime warranty on all locks & panic/exit devices
- Exceptional durability & security achieving hurricane rating without added hardware
- Full height locking channel provides a full height 5/8" deadbolt for superior security

SIMPLICITY

ELIMINATES TROUBLESOME HARDWARE

- No Astragals
- No vertical rods
- No flush bolts
- No coordinators
- No exposed hinge knuckles



OFFICES IN

Orange County • Las Vegas
Reno • San Diego

(866) 534-DOOR (3667)

www.doorsysinc.com

